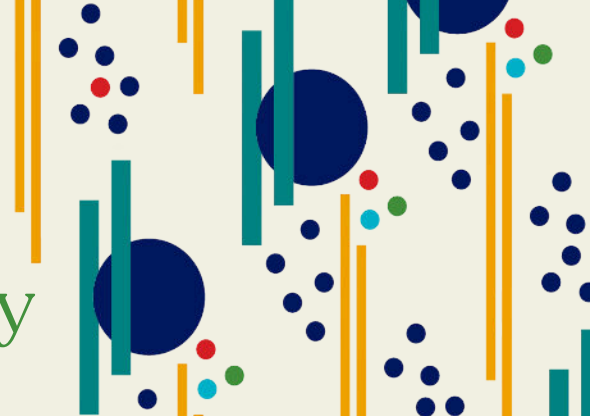


Green Door Fund for Workforce Development & Education Grant Opportunity



2025 Community Impact Grant Guidelines

Rural communities face unique challenges, from limited mental health resources to workforce development gaps and health inequities—barriers that hinder long-term prosperity. Through strategic partnerships and targeted investments, the Greater Fayette Community Foundation (GFCF) is committed to bridging these gaps, empowering local organizations, and driving meaningful impact across the region.

The Green Door Fund for Workforce Development & Education (GDF) is dedicated to advancing workforce development and education in rural Central Texas. By bringing together community partners, the Fund identifies resources and solutions to enhance economic security and educational opportunities for local students and professionals. Through strategic investments in organizations and programs, this community-led initiative empowers individuals with the skills and knowledge needed to drive growth, resilience, and long-term success in our region.

Funding Priorities

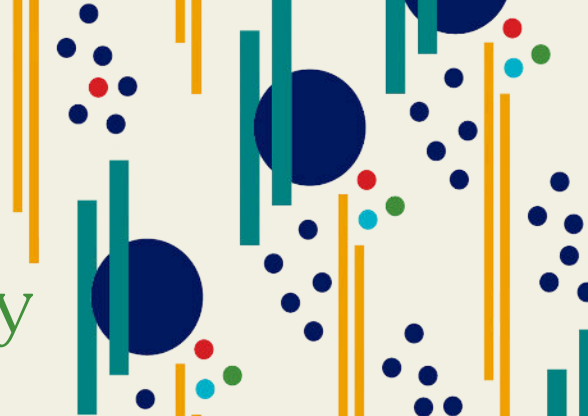
- **Investing in Solutions for a Resilient Workforce and Thriving Communities:** GDF focuses on initiatives that strengthen local collaboration, provide vocational training, and empower youth entrepreneurship. By addressing systemic barriers like housing, childcare, and mental health access, the Fund supports innovative programs that build a resilient workforce and foster long-term community growth. Funding will support:
- **Strengthen Regional Workforce Collaboration:** Proposals should foster partnerships and resource sharing across organizations, communities, and sectors to achieve greater regional impact. Priority is given to initiatives that demonstrate measurable outcomes in bridging gaps and reducing duplication of efforts among regional stakeholders.
- **Vocational and Job Skills Training:** Programs offering hands-on training, certifications, and apprenticeships that directly lead to employment in high-demand industries. Encourage partnerships with local employers to ensure training aligns with current workforce needs and job market trends.
- **Youth Entrepreneurships:** Initiatives should empower youth by providing mentorship, education, and resources to start or expand their business ventures. Prioritize initiatives that include both entrepreneurial skill-building and opportunities for youth to practice these skills in real-world settings.
- **Systemic Issues to Assist Workforce:** Programs must address key barriers, such as affordable housing, childcare, transportation, or access to mental health services, to enable workforce participation and advancement. Solutions should integrate support services or policy advocacy to create long-term improvements in workforce accessibility and stability.

Jamie Lee Manning

Sr. Director of Community Impact
jlmanning@greaterfayette.com



Green Door Fund for Workforce Development & Education Grant Opportunity



Eligibility To Apply

The Green Door Fund for Workforce Development and Education builds community capacity and supports innovations to improve workforce development in Austin, Bastrop, Burleson, Caldwell, Colorado, DeWitt, Fayette, Fort Bend, Gonzales, Guadalupe, Hays, Jackson, Lavaca, Lee, Victoria, Washington, Waller, Wharton, and Williamson counties.

Applicants must have a physical address in one of these counties or provide programming, services, or support to residents there. Organizations must be 501(c)(3) tax-exempt and in good standing in their state.

New or emerging groups, coalitions, resident-led networks, or collaborations without 501(c)(3) status may apply through a qualified fiscal sponsor that meets the foundation's eligibility criteria. Organizations engaged in community-driven work may also qualify through fiscal sponsorship. If you are unsure about your eligibility, **please contact Jamie Lee Manning** at jlmanning@greaterfayette.com for guidance. To further support grassroots organizations and informal networks, GFCF will host a Fiscal Sponsorship Workshop on May 21st. [Register for the webinar here.](#)

Eligible applicants include 501(c)(3) organizations in good standing, collaboratives with a 501(c)(3) lead organization, resident-led or grassroots initiatives with fiscal sponsorship if needed, and emerging efforts focused on creating positive community change.

Grant Terms & Award Amounts: Standard grants are awarded for 12 month terms, with a maximum award of \$10,000 and no minimum amount.

Non-Discrimination: Applicants will be asked to read and agree to a non-discrimination policy to confirm that your organization or fiscal sponsor has a stated clause that includes race, ethnicity, gender, religion, age, national origin, ability, sexual orientation, gender identity, and any other consideration made unlawful by applicable law, encompassing both employment practices and provision of services.

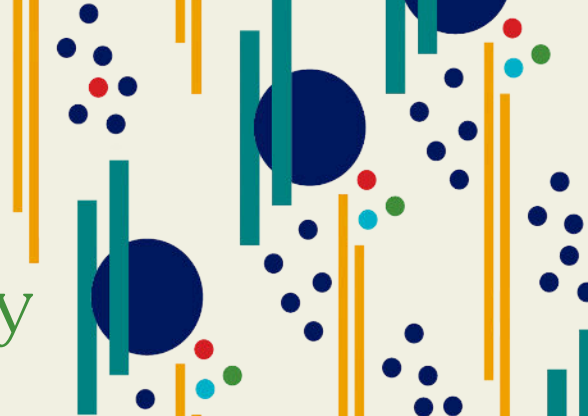
Grant Cycle Limits: Organizations may receive a Community Impact Grant for up to three consecutive years through the competitive grant process. After three years of funding, they must wait one year before reapplying.

Funding Restrictions: GFCF does not fund individuals, endowments, political activities, or efforts to influence legislation or support candidates. Programs that require adherence to specific religious beliefs are also ineligible; however, faith-based organizations serving the broader community may apply.

Jamie Lee Manning
Sr. Director of Community Impact
jlmanning@greaterfayette.com



Green Door Fund for Workforce Development & Education Grant Opportunity



Application Process

Applications open from June 1 to June 30, 2025. Organizations can access the online application portal starting June 1, 2025, at 9:00 AM at <https://greaterfayette.com/community-impact/>. Applications are due by 5:00 PM on June 30, 2025. Grant terms are 12 months and will begin on October 15, 2025.

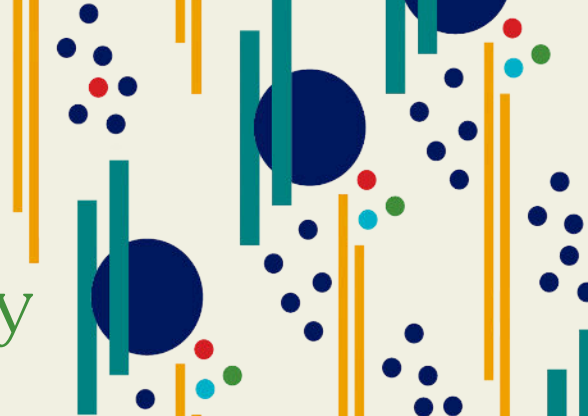
Fund Timetable: The Green Door Fund for Workforce Development & Education follows one grant cycle per year, with set dates for applications, reviews, and grant agreements. Below are the key dates for the 2025–2026 cycle.

Date	Event
May 5, 2025	Guidelines Posted
May 7, 2025	Grant Rollout Webinar
June 1–30, 2025	Application Open Window
June 4 & 5, 2025	In-Person Information Workshops
August 15, 2025	Grantee Notifications
October 7, 2025	Community Impact Grantee Celebration
October 15, 2025	Grant Term Begins

Jamie Lee Manning
Sr. Director of Community Impact
jlmanning@greaterfayette.com



Green Door Fund for Workforce Development & Education Grant Opportunity



Learning & Reporting

GFCF values partnership over compliance and encourages open dialogue about the impact of funded initiatives. Within 12 months of funding, grantees are asked to engage in a flexible learning and reporting process—this may include a conversation, site visit, or brief written update—tailored to the organization's capacity. These reflections help us learn together and strengthen future collaboration.

Additional Support & Resources

Foundation staff are available to answer questions regarding strategic priorities, grant opportunities, and the application process.

- **Application Guide:** See the attachment Application Addendum for an overview of required questions and guidelines to complete your application.
- **Office Hours:** Schedule an appointment with the Senior Director of Community Impact to discuss your proposal. Office hours will be posted on social media in early May 2025.
- **Workshops:** Two in-person sessions and two webinars to provide applicant guidance.
- **GFCF Website:** <https://greaterfayette.com/gdf/>
- **Contact Information:**
 - Jamie Lee Manning, Senior Director of Community Impact: jlmanning@greaterfayette.com
 - Ashleigh Parks, Senior Director of Community Engagement: ashleigh@greaterfayette.com
 - Susannah Mikulin, CEO: susannah@greaterfayette.com

About the Greater Fayette Community Foundation

Founded in 2001, the Greater Fayette Community Foundation (GFCF) has served as a vital bridge connecting donors, nonprofits, and community leaders to address the evolving needs of rural South Central Texas.

For over two decades, GFCF has championed a community-led, community-driven approach, awarding more than \$1.5 million in grants and scholarships to expand access to education, healthcare, and economic opportunity.

Building on this legacy, the Foundation is deepening its commitment to grassroots leadership—partnering with organizations, local leaders, and donors to tackle challenges and improve quality of life across the region.

Jamie Lee Manning

Sr. Director of Community Impact
jlmanning@greaterfayette.com

