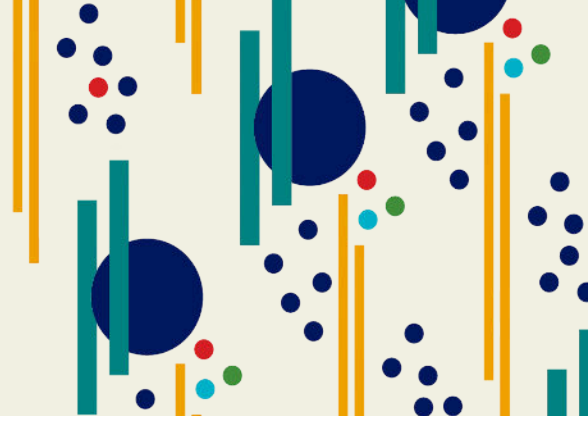


# Red Door Fund for Mental Health Grant Opportunity



## 2025 Community Impact Grant Guidelines

Rural communities face unique challenges, from limited mental health resources to workforce development gaps and health inequities—barriers that hinder long-term prosperity. Through strategic partnerships and targeted investments, the Greater Fayette Community Foundation (GFCF) is committed to bridging these gaps, empowering local organizations, and driving meaningful impact across the region.

Mental health challenges are often more pronounced in rural areas, where resources and support can be limited. The Red Door Fund for Mental Health (RDF) is dedicated to changing this reality.

By increasing access to mental health resources, fostering understanding, and reducing stigma, the fund empowers individuals and families to navigate their mental health journey with dignity and hope. Through awareness campaigns and community investments, Red Door is building a region where everyone feels supported, accepted, and unashamed.

## Funding Priorities

Does Your Organization Support Accessible, Navigable, and Stigma-Free Mental Health Resources in Rural Communities? The RDF supports programs that expand access to mental health services, including innovative therapies, peer support groups, and community-based resources. We also fund initiatives that raise awareness and provide education about mental health, empowering individuals and families to seek help and build resilience.

- **Increasing Access to Service Providers:** Support for programs that increase the availability of mental health providers, including traditional and creative therapies. Initiatives that expand the number and type of peer support groups (e.g., for parents, individuals dealing with substance abuse, ADHD, trauma).
- **Awareness and Education:** Programs aimed at increasing awareness and education about mental health issues within the community.
- **Affordability and Accessibility:** Projects that make mental health services more affordable and easier to access. Efforts to improve the ease of finding and navigating mental health resources through physical documents, people, or digital platforms.
- **Community Culture and Support:** Initiatives to reduce the stigma associated with mental health and build community resilience. Programs that encourage and support intentional connections and person-to-person relationships in various community settings (e.g., home, work, school, church).

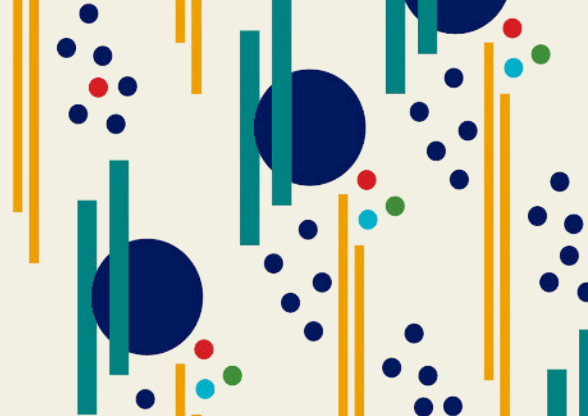
---

Jamie Lee Manning

Sr. Director of Community Impact  
jlmanning@greaterfayette.com



# Red Door Fund for Mental Health Grant Opportunity



## Eligibility To Apply

The Red Door for Mental Health builds community capacity and supports innovations to improve mental health and well-being in Austin, Bastrop, Burleson, Caldwell, Colorado, DeWitt, Fayette, Fort Bend, Gonzales, Guadalupe, Hays, Jackson, Lavaca, Lee, Victoria, Washington, Waller, Wharton, and Williamson counties.

Applicants must have a physical address in one of these counties or provide programming, services, or support to residents there. Organizations must be 501(c)(3) tax-exempt and in good standing in their state.

New or emerging groups, coalitions, resident-led networks, or collaborations without 501(c)(3) status may apply through a qualified fiscal sponsor that meets the foundation's eligibility criteria. Organizations engaged in community-driven work may also qualify through fiscal sponsorship. If you are unsure about your eligibility, **please contact Jamie Lee Manning** at [jlmanning@greaterfayette.com](mailto:jlmanning@greaterfayette.com) for guidance. To further support grassroots organizations and informal networks, GFCF will host a Fiscal Sponsorship Workshop on May 21st. [Register for the webinar here.](#)

Eligible applicants include 501(c)(3) organizations in good standing, collaboratives with a 501(c)(3) lead organization, resident-led or grassroots initiatives with fiscal sponsorship if needed, and emerging efforts focused on creating positive community change.

**Grant Terms & Award Amounts:** Standard grants are awarded for 12 month terms, with a maximum award of \$10,000 and no minimum amount.

**Non-Discrimination:** Applicants will be asked to read and agree to a non-discrimination policy to confirm that your organization or fiscal sponsor has a stated clause that includes race, ethnicity, gender, religion, age, national origin, ability, sexual orientation, gender identity, and any other consideration made unlawful by applicable law, encompassing both employment practices and provision of services.

**Grant Cycle Limits:** Organizations may receive a Community Impact Grant for up to three consecutive years through the competitive grant process. After three years of funding, they must wait one year before reapplying.

**Funding Restrictions:** GFCF does not fund individuals, endowments, political activities, or efforts to influence legislation or support candidates. Programs that require adherence to specific religious beliefs are also ineligible; however, faith-based organizations serving the broader community may apply.

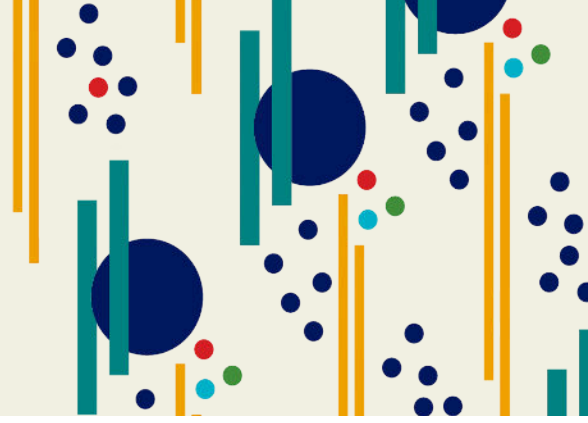
---

Jamie Lee Manning

Sr. Director of Community Impact  
[jlmanning@greaterfayette.com](mailto:jlmanning@greaterfayette.com)



# Red Door Fund for Mental Health Grant Opportunity



## Application Process

Applications open from June 1 to June 30, 2025. Organizations can access the online application portal starting June 1, 2025, at 9:00 AM at <https://greaterfayette.com/community-impact/>. Applications are due by 5:00 PM on June 30, 2025. Grant terms are 12 months and will begin on October 15, 2025.

**Fund Timetable:** The Red Door for Mental Health follows one grant cycle per year, with set dates for applications, reviews, and grant agreements. Below are the key dates for the 2025–2026 cycle.

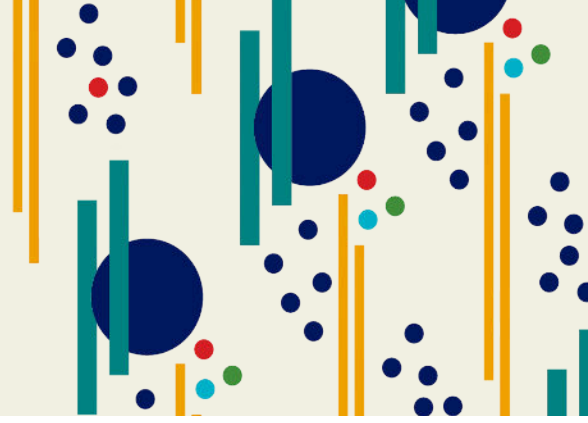
Date	Event
May 5, 2025	Guidelines Posted
May 7, 2025	Grant Rollout Webinar
June 1–30, 2025	Application Open Window
June 4 & 5, 2025	In-Person Information Workshops
August 15, 2025	Grantee Notifications
October 7, 2025	Community Impact Grantee Celebration
October 15, 2025	Grant Term Begins

---

Jamie Lee Manning  
Sr. Director of Community Impact  
[jlmanning@greaterfayette.com](mailto:jlmanning@greaterfayette.com)



# Red Door Fund for Mental Health Grant Opportunity



## Learning & Reporting

GFCF values partnership over compliance and encourages open dialogue about the impact of funded initiatives. Within 12 months of funding, grantees are asked to engage in a flexible learning and reporting process—this may include a conversation, site visit, or brief written update—tailored to the organization's capacity. These reflections help us learn together and strengthen future collaboration.

## Additional Support & Resources

Foundation staff are available to answer questions regarding strategic priorities, grant opportunities, and the application process.

- **Application Guide:** See the attachment Application Addendum for an overview of required questions and guidelines to complete your application.
- **Office Hours:** Schedule an appointment with the Senior Director of Community Impact to discuss your proposal. Office hours will be posted on social media in early May 2025.
- **Workshops:** Two in-person sessions and two webinars to provide applicant guidance.
- **GFCF Website:** <https://greaterfayette.com/gdf/>
- **Contact Information:**
  - Jamie Lee Manning, Senior Director of Community Impact: [jlmanning@greaterfayette.com](mailto:jlmanning@greaterfayette.com)
  - Ashleigh Parks, Senior Director of Community Engagement: [ashleigh@greaterfayette.com](mailto:ashleigh@greaterfayette.com)
  - Susannah Mikulin, CEO: [susannah@greaterfayette.com](mailto:susannah@greaterfayette.com)

## About the Greater Fayette Community Foundation

Founded in 2001, the Greater Fayette Community Foundation (GFCF) has served as a vital bridge connecting donors, nonprofits, and community leaders to address the evolving needs of rural South Central Texas.

For over two decades, GFCF has championed a community-led, community-driven approach, awarding more than \$1.5 million in grants and scholarships to expand access to education, healthcare, and economic opportunity.

Building on this legacy, the Foundation is deepening its commitment to grassroots leadership—partnering with organizations, local leaders, and donors to tackle challenges and improve quality of life across the region.

---

Jamie Lee Manning

Sr. Director of Community Impact  
[jlmanning@greaterfayette.com](mailto:jlmanning@greaterfayette.com)

